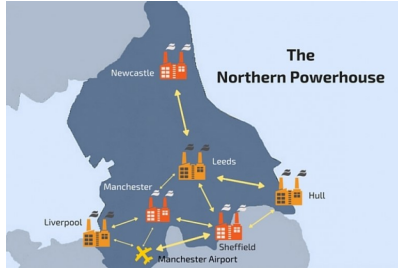


Year 6: Local Geography

'Manchester's Link to other cities'

Key Learning

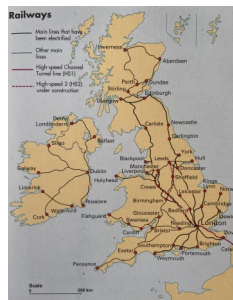
Manchester is one of the major cities in the North of England. Other major cities in the North of England include: Liverpool, Sheffield, Leeds, Newcastle and Hull



Settlements were often established in areas where there are natural resources and good transport links. In the past this may have been in the form of rivers.

Manchester	Manchester Ship Canal, production of cotton.
Liverpool	Access to the Irish Sea via the River Mersey Estuary– trade
Newcastle	Access to the River Tyne and production and export of coal
Leeds	Production and trading of wool
Sheffield	Close to the River Sheaf. Production of Steel.

Due to its size and location Greater Manchester has excellent links with other major cities in the UK.

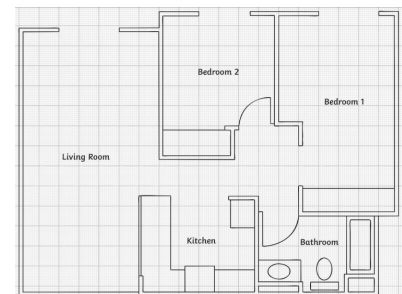


We can carry out fieldwork to find out information about transport and reasons for travel in our local area. We may collect this using electronic devices such as surveys and can choose different ways to present our findings.

The Manchester Ship Canal is a waterway that links Manchester with the Irish Sea. Starting at the Mersey Estuary near Liverpool it follows the route of the River Mersey and River Irwell. Built in 1894, Manchester Port, along with the ship canal, turned Manchester from a landlocked city into one of the busiest ports in the UK.



A plan is similar to a map but is of a smaller area and is drawn in more details. Maps are drawn to scale usually 1cm=10m or <10m.



Barton swing aqueduct is the only swing aqueduct in the world. It allows the Bridgewater Canal to pass over the Manchester Ship Canal.

Manchester Airport is one of the largest airports outside of London and is used to transport passengers and goods all over the world.



We can collect data about the weather using thermometers, rain gauges, weather vanes and data loggers. We can use this information to predict the weather in the future.

Key Vocabulary

plan	A detailed drawing of a small area for example a building or a bridge.
aqueduct	A channel for carrying water across a gap. This is usually in the form of a bridge.