

## Year 3: Local History Swinton

### Key Learning

Swinton has not always looked as it does today. It has changed lots of many years. It has grown in size and the land use of the area has changed.

The name Swinton comes the Old English words swin (meaning pigs) and tun (meaning an enclosure or farm).

People used to call it 'swinetown'

We can look at maps to see how an area has changed over time.

Victorian Times

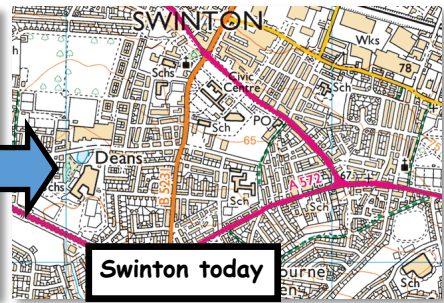
Queen Elizabeth becomes Queen



**1890's Swinton**



**1950's Swinton**



**Swinton today**

We can also find out about the past by looking at photographs.

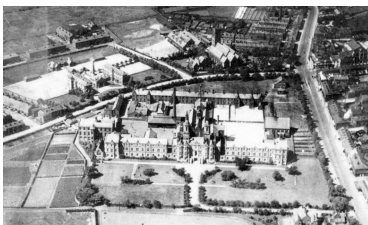
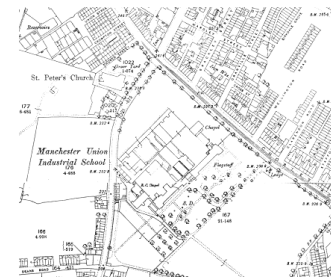
Asking questions helps us to find out about the past.

During the Victorian times work-houses were set up to offer homes and food to poor people. They were very strict places where people had to work extremely hard.

The school had its own land with animals and gardens where fruit and vegetables were grown. There was also a cottage hospital but many children were in poor health and died.



Children in the school were known as inmates but they were taught lots of different lessons and even went swimming at Swinton swimming baths. The school also had their own band who played in parks in Swinton, Salford and Manchester.



Swinton Industrial School was set up for pauper children and wanted to focus on educating the children as well as offering them food and a safe home.



Charles Dickens, a famous author, visited the school and wrote about it in an article called 'A Day in a Pauper's Palace'

The School was demolished in 1933 and now the Salford Civic Centre stands in it's place.

### Key Vocabulary

Century	A word used to describe 100 years.
decade	A word to describe 10 years
pauper	A very poor person.
Victorian times.	The time period when Queen Victoria was Queen. 1837-1901

### Significant People/Places

Queen Victoria was on the throne when Salford Industrial school was built.



Salford Civic Centre -now stands on the site of the Swinton Industrial Swinton

