

Year 2 Local History: Moorside Primary School

Key Learning

Moorside was originally built in 1934.



Past

The new building was built in 2013.



Present

We can ask people questions to find out about the past.



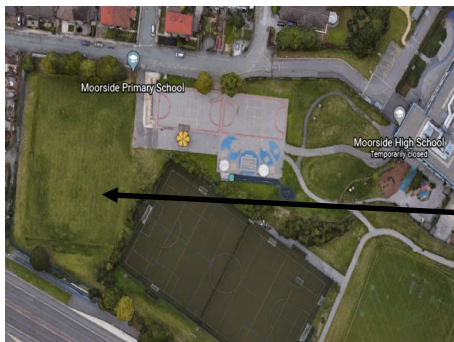
Who...

What...

Where...

When...

How...




In the past Moorside Primary School was situated where the school field is now.

- The school has got much bigger. It used to have one floor but now it has three floors.
- The school used to have 400 pupils. Now it has over 600 pupils.

Key Vocabulary

past	Things that have already happened.
present	Things that are happening now.
modern	Something that has existed or developed in the present time.
old	Something that happened or belonged in the past.

Schools would have been different in 1934. As technology has developed, school resources have improved.

Past 1934	Present Now
	
	
	

Team Moorside

Being part of Team Moorside means working as a team, sharing an ethos to achieve a common goal.

